

A photograph of several wind turbines in a desert landscape under a clear blue sky. The turbines are white and stand on tall poles. The foreground shows some low-lying desert vegetation. The image has a red overlay at the bottom and a red box in the top right corner.

Just Energy Transition in Coal Regions

“Innovation Regions for a Just Energy Transition”

Project Presentation

October 2024

The IKI JET Project

“Innovation Regions for a Just Energy Transition”

Commissioning Parties International Climate Initiative (IKI) of the Federal Ministry for Economic Affairs and Climate Action (BMWK) and jointly financed by the EU Commission – DG INTPA, Global Challenges Multiannual Indicative Programme 2021-27 for the **JET-CR** Platform

Objective Support and accelerate just energy transitions (JET) away from coal to renewable energy and other sustainable economic activities in the Global South

Countries Global approach with in-depth support to Indonesia and Colombia

Implementing organisations

- Deutsche Gesellschaft für Internationale Zusammenarbeit (GIZ) GmbH
- Climate Action Network International (CAN International)
- International Institute for Sustainable Development (IISD)
- International Labour Organisation (ILO)
- Solidarity Center
- Union Aid Abroad – APHEDA
- Wuppertal Institute for Climate, Environment and Energy

Project duration December 2022 – January 2027

Implemented by



The project in a nutshell

Support countries in **developing plans for a just transition away from coal to renewable energy and other sustainable economic activities with a focus on the regional level.**

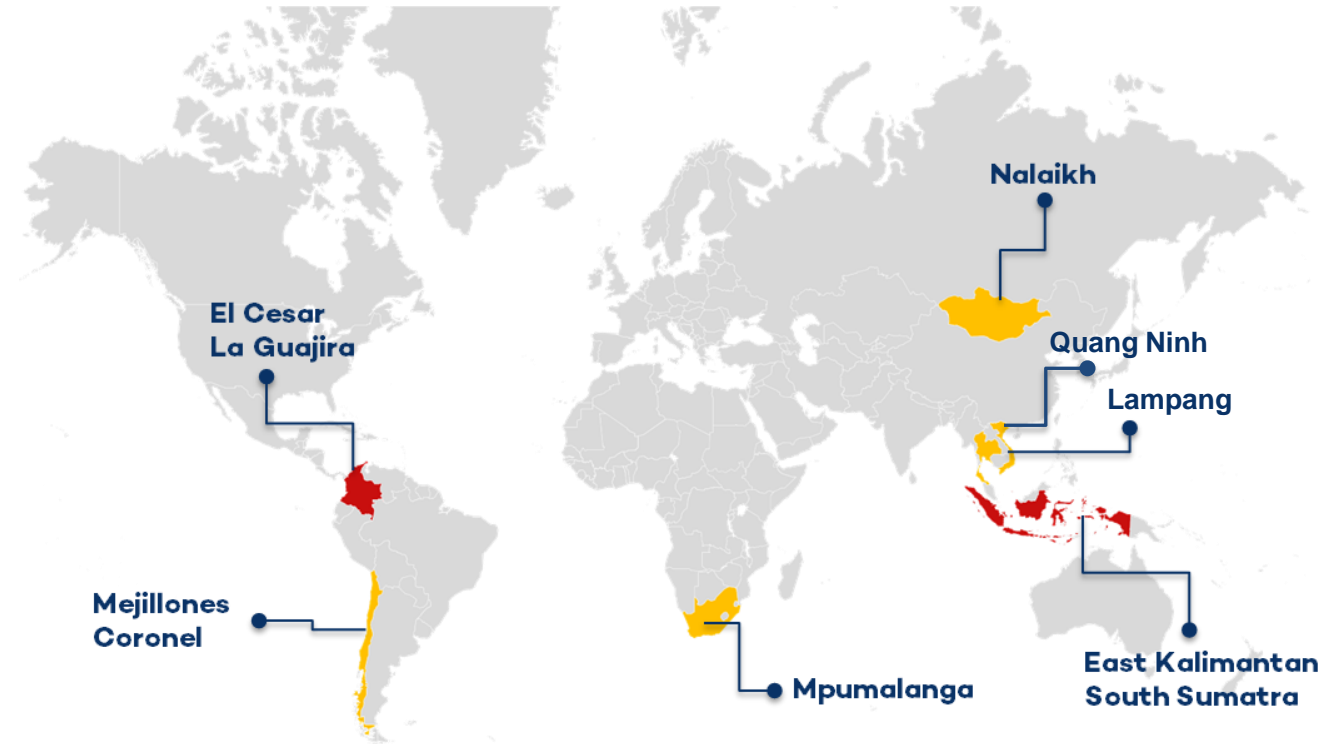
Project components



Target countries and regions

Participants in the **Interregional Platform**

- Chile (Coronel, Mejillones)
- Colombia (La Guajira, El Cesar)
- Indonesia (East Kalimantan, South Sumatra)
- Mongolia (Nalaikh district)
- South Africa (Mpumalanga)
- Thailand (Lampang)
- Viet Nam (Quang Ninh)

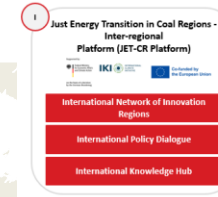


Global

Close cooperation with initiatives like:



The JET- CR Interregional Platform



**International Network
of coal regions**

**Peer-to-peer
knowledge
exchange and
experience
sharing**

**Training
programs and
learning forum**

**In-country
technical
assistance and
capacity
building for
participating
JET regions**

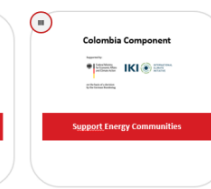
**International
Policy
Dialogue on
JET**

**International
dialogue on
policies to
support JET in
coal regions**

**Knowledge Hub
on JET**

**Online portal &
knowledge
platform on JET
in coal regions**

**New knowledge
on JET in coal
regions**



In-depth interventions: Indonesia and Colombia

- Provide intensive support for social dialogue, stakeholder engagement, innovation, employment, and labor policies, and energy transition processes
- Help spur accelerated action and advance coal-related just energy transition in the regions
- Inform, support and encourage respective policy discussion and formulation on the national level



Core element: Co-creation of knowledge

Knowledge generation, based on local needs, and informing social dialogue, stakeholder engagement and transformational measures:

- A **mapping** of key actors
- **Just transition scenarios for the power sector**
- **Employment and social impacts of scenarios assessments,**
- **Impact assessments of policy and investment options**
- **Options for transformational measures**



Source: Wuppertal Institute

Core element: Social Dialogue and Stakeholder Engagement

- Enhancing the **capacity** of unions, communities, and employers' organisations
- **Mapping** of existing institutions and mechanisms
- Social dialogue **mechanisms**
- Establishment of platforms for **engagement** of civil society
- **Recommendations** on regional just transition
- Just transition **strategies** designed through social dialogue
- **CSO input** to development of recommendations for a regional just energy transition



Core element: Potential Transformational Measures

Formulation of just energy transition **plans** and **strategies**, including policies and programs and targeted support for **potential transformational measures**:

- Economic **diversification and regeneration**
- **Social protection measures**
- **Decent job creation** measures
- **Community-based models** for economic diversification and regeneration

Measures to be designed based on research and dialogue



Promoting dialogue and influencing in regional and national policies

JET Strategy in the Nalaikh Region, Mongolia

Development of a JET strategy with the regional government to be included in the Nalaikh Region Development Plan



Plan TEJ Nalaikh, Mongolia.

Regional Consultation Forums, Indonesia

Establishment of Consultation Forums in the South Sumatra and East Kalimantan regions with tripartite and non-tripartite participation



RCF East Kalimantan, Indonesia.
© Hermand Barker

Regional and National Development Plan: Indonesia

Supporting the inclusion of JET aspects in National and Regional Development Plans



National Development Plan, Indonesia.

Key elements of the JET-CR Platform

International Forum for Coal Regions in Transition

Yearly hybrid event convening stakeholders (policy-makers, NGOs, academics, unions, & industry) from IKI JET regions to share experiences and lessons learnt of just transition processes around the world

International Forum 2023

Berlin, Germany & online



Opening - Anja Hajduk, State Secretary, Ministry for Economic Affairs and Climate Action



© IISD/ Bethan Jones

Panel discussion with representatives of Indonesia, Thailand, Mongolia and Viet Nam

International Forum 2024

Pretoria, South Africa & online



Opening of the forum, with participants from all the IKI JET regions and the Philippines



© Jess Meniere

Opening - Duduzile Sibiya, Mpumalanga Provincial Government, DARDLEA

Find all recordings and presentations [here](#) & the key-takeaways [here](#)

Find all recordings, presentations & key-takeaways [here](#)

Key elements of the JET-CR Platform

Expert Exchange Series

01
Expert Exchange Series

The Just Transition Toolbox for Coal Regions - Knowledge needs in South-East-Asia

20 May 2023
Online



[Just Transition Toolbox](#)

02
Expert Exchange Series

Just Energy Transition for all - gendering the debate

26 September 2023
Online



[Gendering the debate: Just energy transition for all](#)

03
Expert Exchange Series

Skilling, Upskilling and Reskilling for a Just Energy Transition

24 January 2024
Online



[Skilling, Upskilling and Reskilling for a Just Transition in Coal Regions](#)

04
Expert Exchange Series

Finance for early retirement of coal-fired power plants

20 March 2024
Online



[Financing the Early Retirement of Coal-Fired Power Plants](#)

05
Expert Exchange Series

Sustainability by Design: Assessment Tool for Just Energy Transition Plans

24 April 2024
Online



[Assessment tools for just energy transition plans](#)

06
Expert Exchange series

Youth Empowerment for a Just Energy Transition

18 June 2024
Online



[Youth Empowerment for a Just Energy Transition](#)

07
Expert Exchange series

Financing Justice in the Just Transition

17 July 2024 - 11 GMT
Online



[Financing Justice in the Just Transition](#)

Country-specific and global knowledge

CASE STUDY

Choosing Renewable Energy for an Industrial Park in Nalaikh, Mongolia

Country: Organisation:
Mongolia GIZ

The Mongolian district of the country's capital Ulaanbaatar has a coal mine. Nalaikh's mining area employs 10,000 people and 1 million tons of coal are produced annually.

[Download publication](#)

CASE STUDIES

The Day Krabi Became Coal-Free, Thailand

Country: Organisation:
Thailand GIZ

This case study looks at the role of activists and community groups in the opening of a proposed coal-free zone.

[Download publication](#)

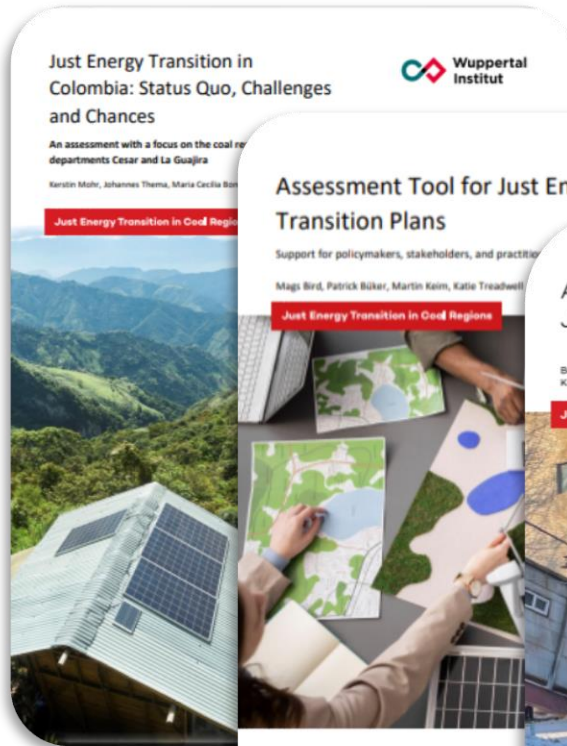
POLICY BRIEF

Just Energy Transitions for All – Gender in just energy transitions

Country: Organisation: Languages:
Global GIZ English

The transformation of the energy system away from coal has gender-specific impacts. These should be properly addressed in just transition strategies. A just energy transition can be seen as chance to make society fairer and more inclusive with respect to gender.

[Download publication PDF](#)



Acknowledgements

Just Energy Transition in Coal Regions

The project "Innovation Regions for a Just Energy Transition" is co-financed by the International Climate Initiative (IKI) of the German Federal Ministry for Economic Affairs and Climate Action (BMWK) and by the Directorate-General for International Partnerships (DG INTPA) of the European Commission (DG INTPA) for the Interregional Platform for Just Energy Transition in Coal Regions (JET-CR).

Supported by:



Federal Ministry
for Economic Affairs
and Climate Action



INTERNATIONAL
CLIMATE
INITIATIVE



Co-funded by
the European Union

on the basis of a decision
by the German Bundestag

Just Energy Transition in Coal Regions

Contact

Deutsche Gesellschaft für Internationale Zusammenarbeit (GIZ)

Philipp Schattenmann
philipp.schattenmann@giz.de

Climate Action Network International

Tasneem Essop
tessop@climatenetwork.org

International Institute for Sustainable Development

Philip Gass
pgass@iisd.ca

International Labour Organisation

Camilla Roman
romanc@ilo.org

Solidarity Center

Abby Güner
aguner@solidaritycenter.org

Union Abroad – APHEDA

Sharan KC
sharankc@apheda.org.au

Wuppertal Institute for Climate, Environment and Energy

Timon Wehnert
timon.wehnert@wupperinst.org