

# SOLUSI

## SOLUTIONS FOR INTEGRATED LAND AND SEASCAPE

Management in Indonesia



SOLUSI, Starting from  
Three Provinces



Strengthen Climate Resilience  
and Biodiversity Protection



Strategy



On behalf of:

Federal Ministry  
for the Environment, Nature Conservation,  
Nuclear Safety and Consumer Protection

of the Federal Republic of Germany



Implemented by:

**giz**



**SNV**

# ABOUT SOLUSI

November 2023 - Desember 2028



**SOLUSI** supports policies, strategies, and actions to mitigate land and sea degradation in Indonesia, increase ecosystem resilience and encourage climate-resilient living.

## STRENGTHENING THE SUSTAINABLE DEVELOPMENT AGENDA

This Indonesia-German cooperation project focuses on biodiversity conservation and ecological restoration as an effort to strengthen sustainable ecosystems, blue and green economies towards sustainable development, in line with the Indonesian government's agenda, market demands, and world trends.

## FROM RIDGE TO REEF APPROACH

**SOLUSI** promotes inclusive and innovative sustainable strategies and actions in related sectors, including agroforestry, aquaculture and sustainable tourism, integrated waste management in ecotourism areas, as well as the promotion of sustainable business and financial models.

## SOLUSI WORKS WITH GOVERNMENT, INDUSTRY AND COMMUNITIES

both at the national and in selected provinces.

# STARTING FROM THREE PROVINCES



**Bangka Belitung Province**

- East Belitung District
- Belitung District

Large marine conservation area  
Priority tourism destination  
Global Geoparks

**Central Sulawesi Province**

- Palu City
- Donggala District
- Sigi District
- Parigi Moutong District

Biosphere preserve  
Large producer of plantation products especially coffee and chocolate  
Disaster mitigation priority areas

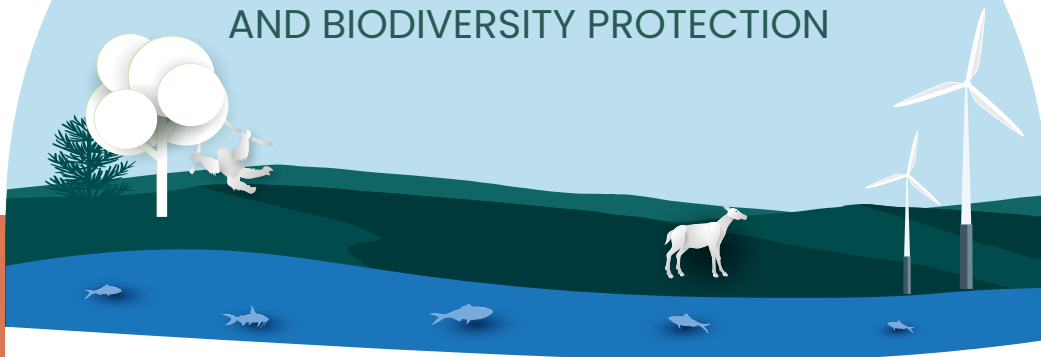
**Central Java Province**

- Kebumen District
- Banyumas District
- Cilacap District

Karst ecosystem  
Variety of food crops  
Center of processing industry

# SOLUTIONS

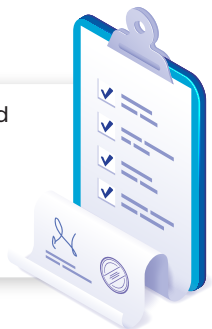
## TO STRENGTHEN CLIMATE RESILIENCE AND BIODIVERSITY PROTECTION



### 01

#### National Policies and Guidelines on Land and Seascape Planning

Support the development of policies, instruments and guidelines needed to integrate aspects of climate resilience and biodiversity into coherent spatial planning and development planning, both at the national and sub-national levels.



### 02

#### Impact Investment and Innovative Financing

Facilitate the development of impact investment strategies and innovative financing with a focus on ecosystem restoration, climate resilience, biodiversity conservation, integrated waste management, and sustainable income generation opportunities to encourage natural resource management ecosystems through public, private and community sector partnerships (PPCP).



### 03

#### Land and Seascape Planning Laboratories, which integrate the nexus on climate resilience, biodiversity and development

Design and evaluate planning processes, policies, and instruments in selected provinces and districts and support the implementation of community-based conservation and ecotourism management models, incentive systems for “zero-waste” in community-based ecotourism areas, and PPCP for climate resilient living.



### 04

#### Capacity Building and Knowledge Management in Integrated Land and Seascape (LaS) Management

Promote knowledge management and support capacity development through training, exchange, dissemination and replication of evidence-based solutions for better integrated Land and Seascape management.



# STRATEGY

**National Policies and Guidelines on Land and Seascape Planning**



**Impact Investment and Innovative Financing**



**Land and Seascape Planning Laboratories**



**Capacity Building and Knowledge Management**



01



**Integration** of green and blue economy into planning processes



Guidelines, decision-making tools and scenario-based models for integrated LaS spatial planning



National strategies on innovative financing and impact investment



Landscape finance



Guidelines on bioprospecting and blue carbon

02



**600,000 hectares LaS areas**

are protected and sustainably managed



Green investment with a volume of EUR 2,800,000



28,000 ha community based LaS management



Business model on integrated LaS



3 community-based ecotourism areas with integrated waste management plan



Evidence-based master plans

03



**6600 communities** are more resilient to the impacts of climate change



3 Public-Private-Community Partnerships



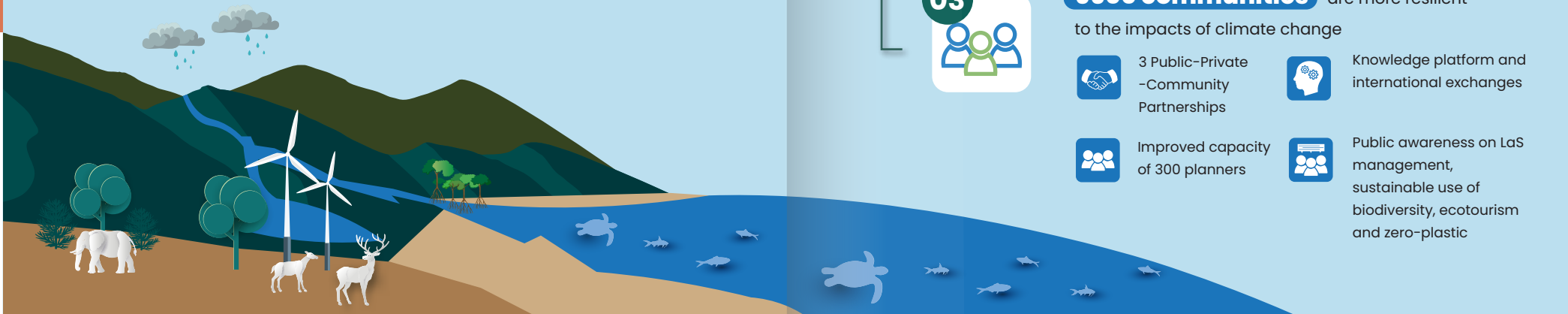
Knowledge platform and international exchanges



Improved capacity of 300 planners



Public awareness on LaS management, sustainable use of biodiversity, ecotourism and zero-plastic



# COLLABORATION OF SOLUSI

## Indonesian – German Cooperation



On behalf of:



Federal Ministry  
for the Environment, Nature Conservation,  
Nuclear Safety and Consumer Protection

of the Federal Republic of Germany



INTERNATIONAL  
CLIMATE  
INITIATIVE

## Implemented by



## Implementing Partners



Let's work together for Solutions,  
Actions, and Mutual Benefits



### CONTACT US:

Address

Jl. Besuki No. 21, Menteng, Jakarta 10310, Indonesia

Yuliana Cahya Wulan | SOLUSI Program Manager

✉ [yuliana.wulan@giz.de](mailto:yuliana.wulan@giz.de)